

# ECG analysis report



Cardiomatics

Recorded using the Cortrium C3 Holter Monitor

## Personal data

ID: BFH\_16080402  
Interpreting physician: Auto

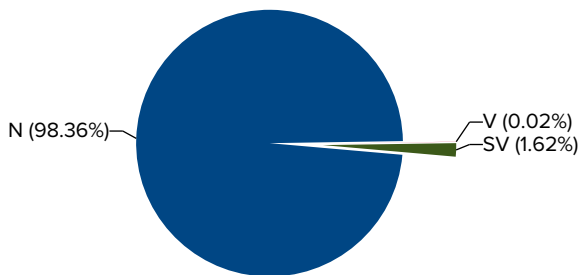
## Examination details

Start time: 2000-01-01 00:00:00  
End time: 2000-01-02 01:39:16  
Duration: 1d 01h 39min 16s  
Nondiagnostic part: 5.85%

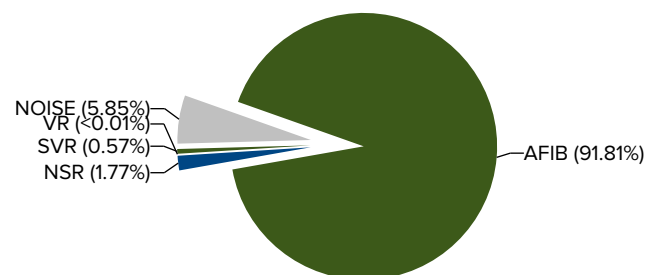
## Examination summary

Heart rate		Ventricular		Supraventricular	
Total beats:	130117	Total V:	23	Total SV:	2110
Average HR:	95	Couplets:	1	Couplets:	218
Min HR:	71	Bigeminies:	0	Bigeminies:	6
Max HR:	141	Trigeminies:	0	Trigeminies:	4
Tachycardias:	338	Vent. tachycardias:	0	SV tachycardias:	122
Bradycardias:	0	Vent. bradycardias:	0	AFIB (%):	91.81
Pauses:	1				

## Beats



## Rhythms



## Description

The patient has been examined for 1d 01h 39min 16s.

94.15% of the signal was of sufficient quality and taken under analysis.

The average heart rate was 94, the minimum heart rate was 70 and the maximum heart rate was 140 beats per minute.

Rhythm analysis has detected sinus tachycardia (338 episodes).

Pauses longer than two seconds: 1.

There were 23 ventricular beats detected, with 1 couplets.

There were 2110 supraventricular beats detected, with 6 bigeminies, 4 trigeminies, 218 couplets.

Rhythm analysis has detected supraventricular tachycardia (122 episodes).

Atrial fibrillation was detected in 91.81% of the time.

## Hour-by-hour table

Time		Heart rate					Ventricular		Supraventricular		
From	To	Total beats	Average HR	Min HR	Max HR	Pauses	V beats	V couplets	SV beats	SV couplets	Atrial fibrillation (%)
00:00	01:00	7461	129	116	141	0	6	0	877	95	53.62%
01:00	02:00	6325	111	98	131	0	1	0	55	12	94.96%
02:00	03:00	5855	102	93	116	0	0	0	69	6	99.05%
03:00	04:00	5502	96	87	111	0	0	0	10	0	100.00%
04:00	05:00	5810	102	94	112	0	0	0	43	5	99.72%
05:00	06:00	5454	96	85	110	0	1	0	3	0	100.00%
06:00	07:00	5509	96	90	109	0	0	0	0	0	100.00%
07:00	08:00	5615	98	91	121	0	0	0	1	0	100.00%
08:00	09:00	5736	100	91	115	0	0	0	0	0	100.00%
09:00	10:00	5693	100	89	114	0	3	0	7	2	99.94%
10:00	11:00	5243	92	83	106	0	2	0	3	0	100.00%
11:00	12:00	5537	96	83	110	0	3	0	9	2	99.93%
12:00	13:00	5489	96	78	112	0	0	0	10	0	100.00%
13:00	14:00	4464	79	72	84	0	0	0	195	13	99.26%
14:00	15:00	4718	83	72	98	0	4	1	89	8	99.56%
15:00	16:00	4433	78	74	85	1	1	0	155	20	99.14%
16:00	17:00	4467	79	71	84	0	1	0	128	14	99.30%
17:00	18:00	4457	79	74	84	0	0	0	130	9	99.53%
18:00	19:00	4747	85	74	112	0	0	0	149	16	98.98%
19:00	20:00	4711	83	79	87	0	0	0	50	7	99.66%
20:00	21:00	4869	87	80	106	0	1	0	122	9	99.52%
21:00	22:00	5876	103	92	112	0	0	0	3	0	99.97%
22:00	23:00	5657	99	88	108	0	0	0	1	0	100.00%
23:00	00:00	5577	98	88	106	0	0	0	1	0	100.00%
<b>2000-01-02</b>											
00:00	01:00	913	103	97	113	0	0	0	0	0	13.22%
01:00	01:39	0	-	-	-	0	0	0	0	0	0.00%

## Bradycardia details

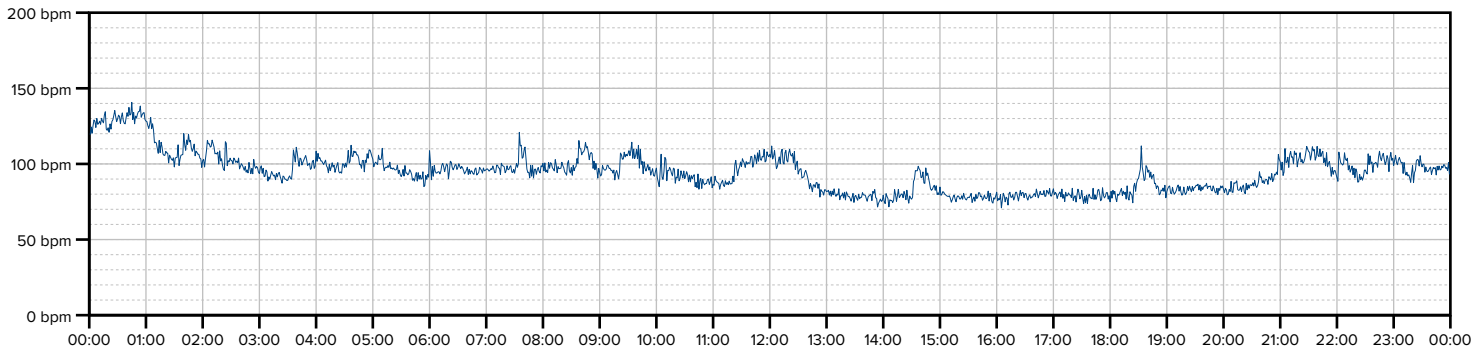
Time		Sinus bradycardia		Ventricular bradycardia	
From	To	Duration	Burden (%)	Duration	Burden (%)
00:00	01:00	00min 00s	0.00%	00min 00s	0.00%
01:00	02:00	00min 00s	0.00%	00min 00s	0.00%
02:00	03:00	00min 00s	0.00%	00min 00s	0.00%
03:00	04:00	00min 00s	0.00%	00min 00s	0.00%
04:00	05:00	00min 00s	0.00%	00min 00s	0.00%
05:00	06:00	00min 00s	0.00%	00min 00s	0.00%
06:00	07:00	00min 00s	0.00%	00min 00s	0.00%
07:00	08:00	00min 00s	0.00%	00min 00s	0.00%
08:00	09:00	00min 00s	0.00%	00min 00s	0.00%
09:00	10:00	00min 00s	0.00%	00min 00s	0.00%
10:00	11:00	00min 00s	0.00%	00min 00s	0.00%

Time		Sinus bradycardia		Ventricular bradycardia	
From	To	Duration	Burden (%)	Duration	Burden (%)
11:00	12:00	00min 00s	0.00%	00min 00s	0.00%
12:00	13:00	00min 00s	0.00%	00min 00s	0.00%
13:00	14:00	00min 00s	0.00%	00min 00s	0.00%
14:00	15:00	00min 00s	0.00%	00min 00s	0.00%
15:00	16:00	00min 00s	0.00%	00min 00s	0.00%
16:00	17:00	00min 00s	0.00%	00min 00s	0.00%
17:00	18:00	00min 00s	0.00%	00min 00s	0.00%
18:00	19:00	00min 00s	0.00%	00min 00s	0.00%
19:00	20:00	00min 00s	0.00%	00min 00s	0.00%
20:00	21:00	00min 00s	0.00%	00min 00s	0.00%
21:00	22:00	00min 00s	0.00%	00min 00s	0.00%
22:00	23:00	00min 00s	0.00%	00min 00s	0.00%
23:00	00:00	00min 00s	0.00%	00min 00s	0.00%
<b>2000-01-02</b>					
00:00	01:00	00min 00s	0.00%	00min 00s	0.00%
01:00	01:39	00min 00s	0.00%	00min 00s	0.00%

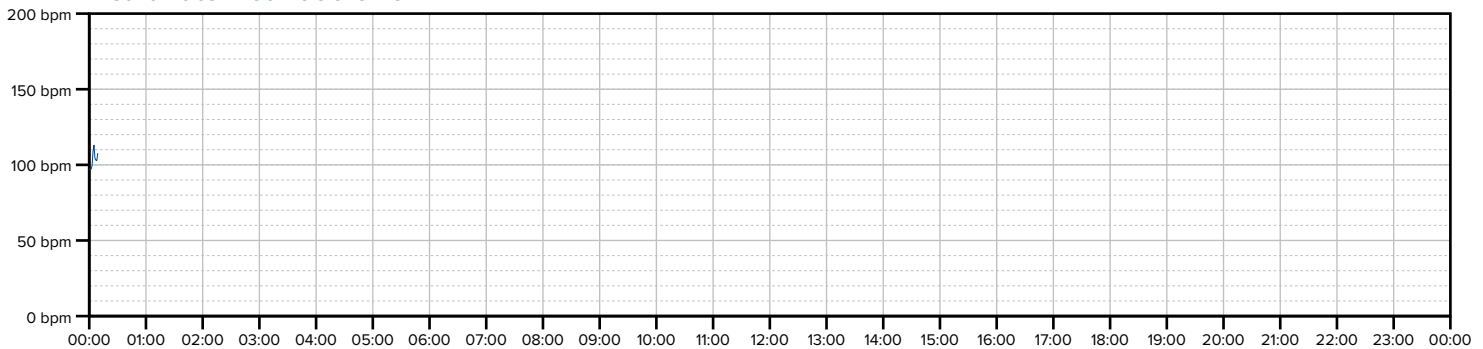
## Heart rate details

Heart rate		Sinus tachycardia		Sinus bradycardia	
<b>Average minutely rate:</b>	94	<b>Longest:</b>	00min 15s	<b>Longest:</b>	-----
<b>Fastest minutely rate:</b>	140 bpm starting at 00:45:00 (day 1)	<b>Fastest N-N:</b>	208 bpm starting at 17:42:43 (day 1)	<b>Slowest N-N:</b>	29 bpm starting at 15:59:09 (day 1)
<b>Slowest minutely rate:</b>	70 bpm starting at 16:05:00 (day 1)	<b>Total time:</b>	15min 44s	<b>Total time:</b>	-----

Heart Rate Plot 2000-01-01



Heart Rate Plot 2000-01-02



## Ventricular details

<b>Total ventricular beats:</b>	23
Max V/min:	2 starting at 09:35:00 (day 1)
Max V/hour:	6 starting at 00:00:00 (day 1)
<b>Ventricular couplets:</b>	1
Fastest:	126 bpm starting at 14:02:34 (day 1)
<b>Ventricular bigeminies:</b>	0
Longest:	-
<b>Ventricular trigeminies:</b>	0
Longest:	-
<b>Ventricular tachycardias:</b>	0
Longest:	-
Fastest:	-

## Supraventricular details

<b>Total supraventricular beats:</b>	2110
Max SV/min:	73 starting at 00:45:00 (day 1)
Max SV/hour:	877 starting at 00:00:00 (day 1)
<b>Supraventricular couplets:</b>	218
Fastest:	190 bpm starting at 00:45:18 (day 1)
<b>Supraventricular bigeminies:</b>	6
Longest:	00min 04s
<b>Supraventricular trigeminies:</b>	4
Longest:	00min 07s
<b>Supraventricular tachycardias:</b>	122
Longest:	00min 05s
Fastest:	195 bpm starting at 00:45:23 (day 1)

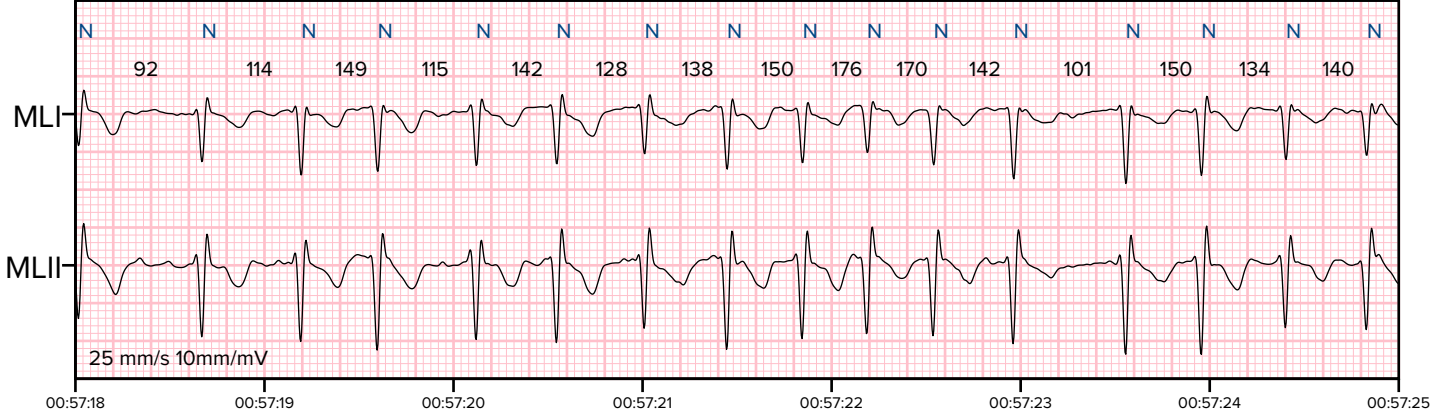
## Atrial fibrillation

<b>Total AFIB time:</b>	23h 33min 13s	<b>Longest AFIB time:</b>	04h 41min 01s
<b>Average AFIB time:</b>	05min 12s	<b>Shortest AFIB time:</b>	00min 00s

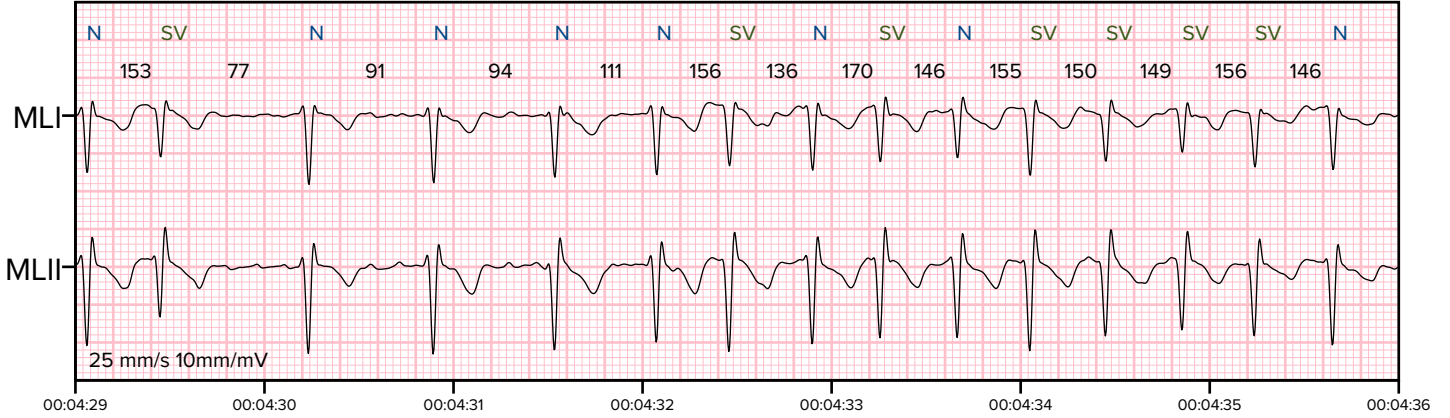
## Selected ECG events



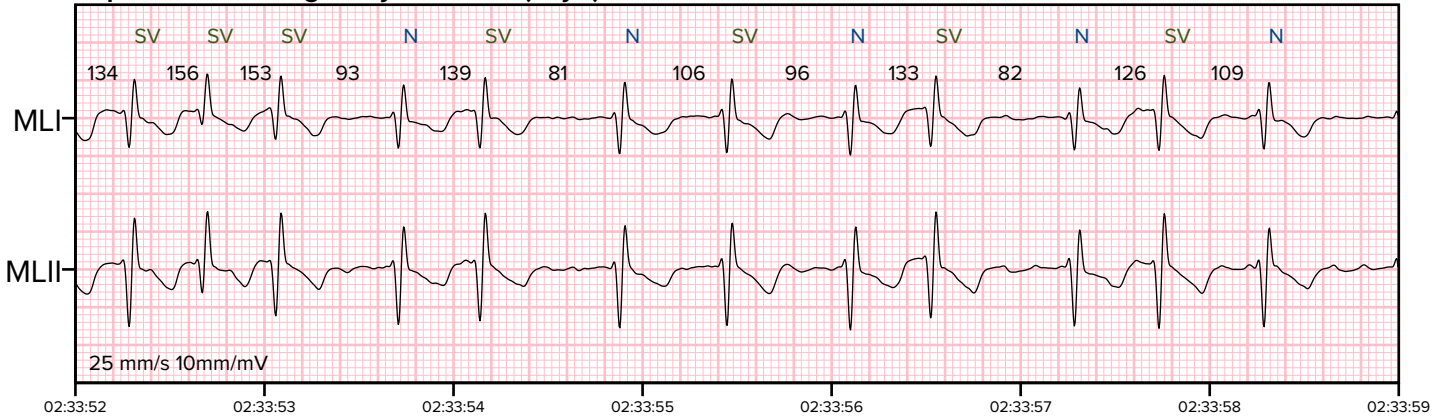
**Sinus tachycardia: 00:57:22 (day 1)**



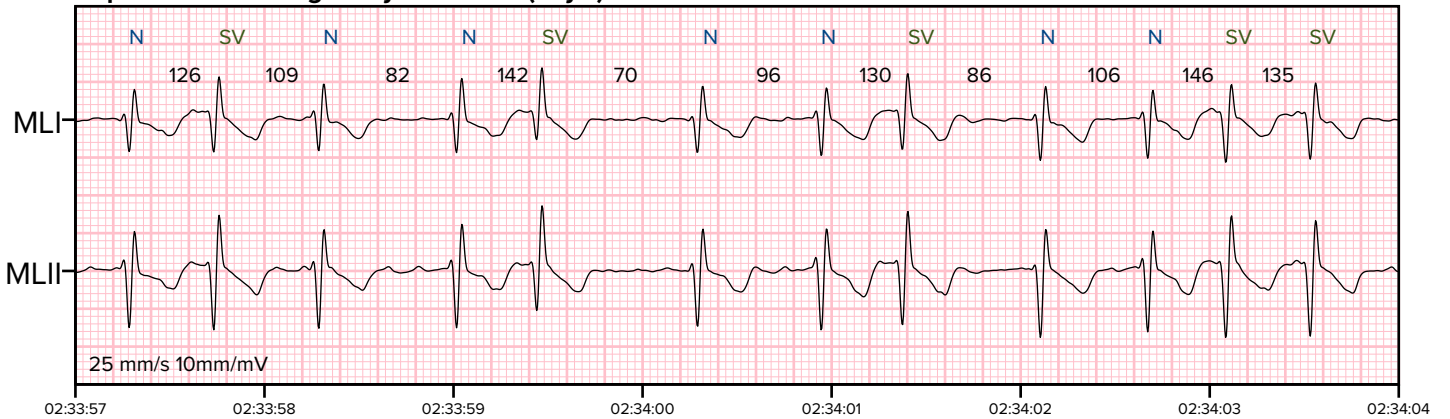
**Supraventricular bigeminy: 00:04:33 (day 1)**



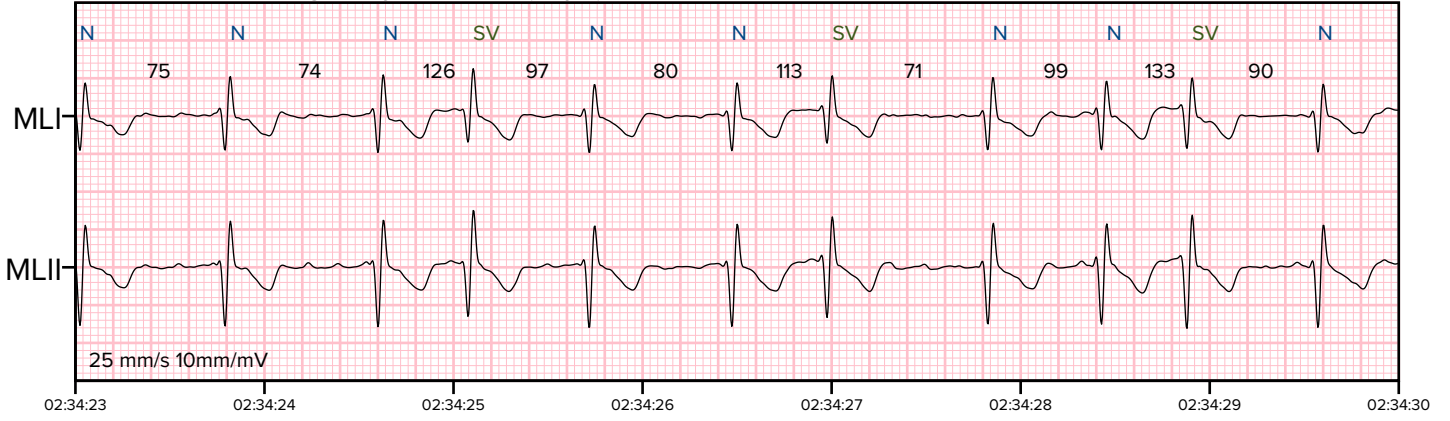
**Supraventricular bigeminy: 02:33:56 (day 1)**



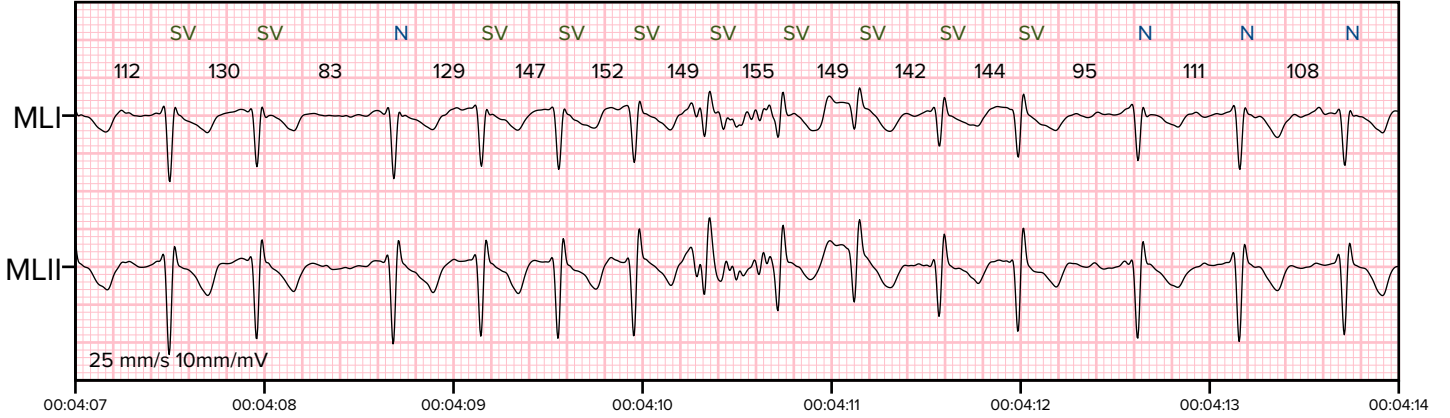
**Supraventricular trigeminy: 02:34:00 (day 1)**



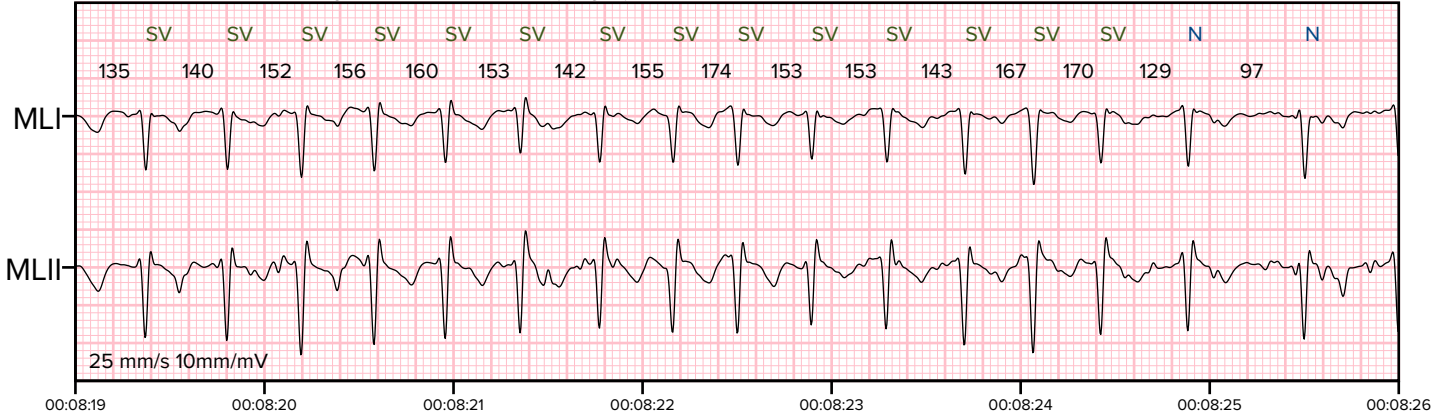
**Supraventricular trigeminy: 02:34:26 (day 1)**



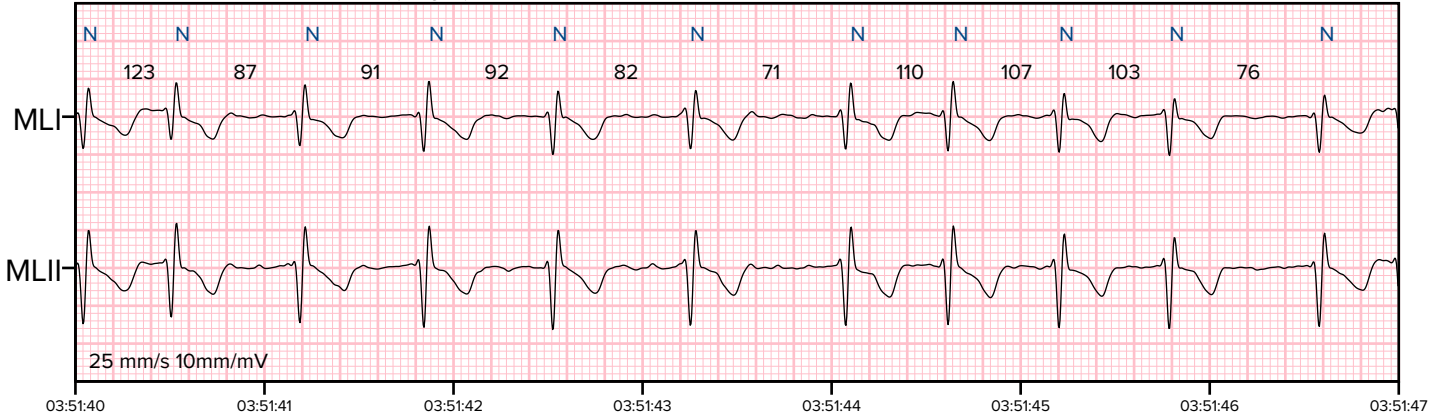
**Supraventricular tachycardia: 00:04:10 (day 1)**



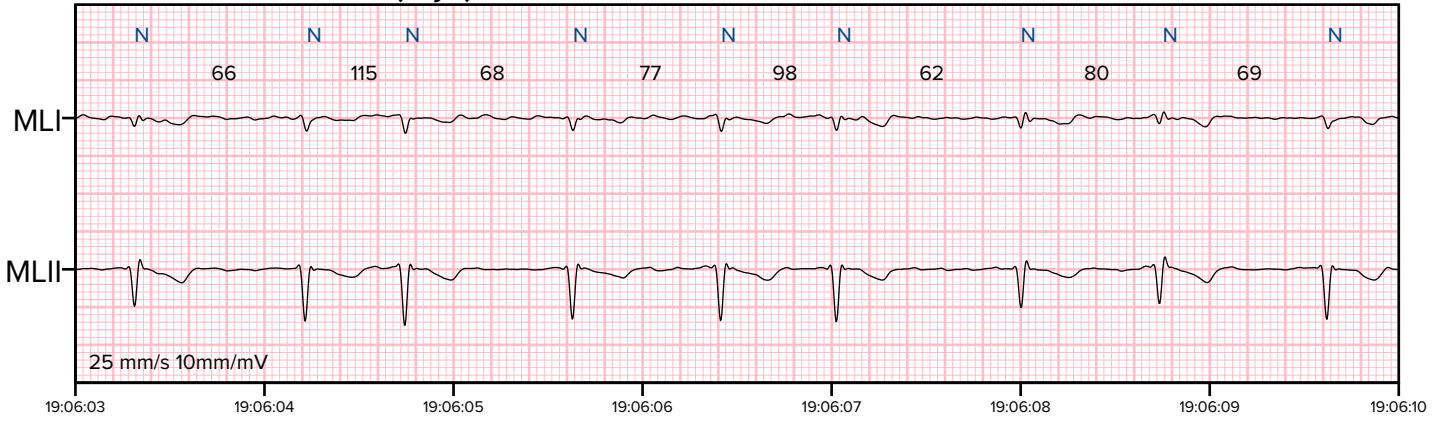
**Supraventricular tachycardia: 00:08:22 (day 1)**



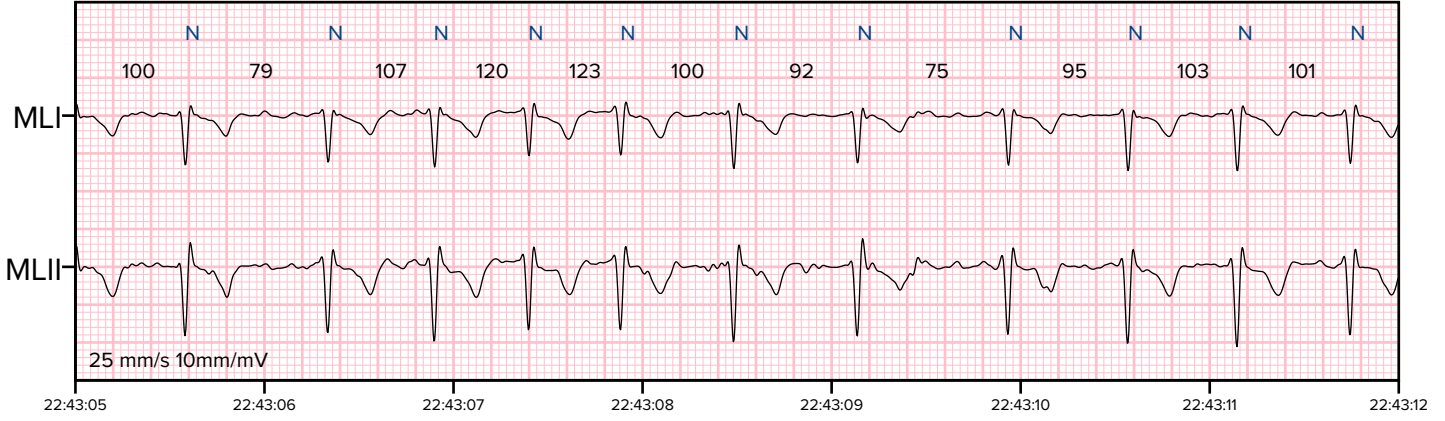
**Atrial fibrillation: 03:51:44 (day 1)**



**Atrial fibrillation: 19:06:06 (day 1)**



**Atrial fibrillation: 22:43:08 (day 1)**



**Algorithm settings**

Minimal pause duration	2000 ms
Sinus bradycardia HR threshold	60 bpm
Ventricular bradycardia HR threshold	50 bpm
HR averaging	per minute